



Wiltshire Lane, Pinner, Middlesex, HA5 2LU



**Lawrence Rand**  
Estate Agents





## Wiltshire Lane, Pinner, Middlesex, HA5 2LU

*A neatly presented three bedroom detached bungalow, available for rental immediately.*

Detached bungalow

Off street parking

Three bedrooms

Two bathrooms (one en-suite)

Guide Price: £1,650 per month



**Lawrence Rand**

Estate Agents

*in the heart of the community.*

01895 632 211

106 Victoria Road, Ruislip, Middlesex, HA4 0AL

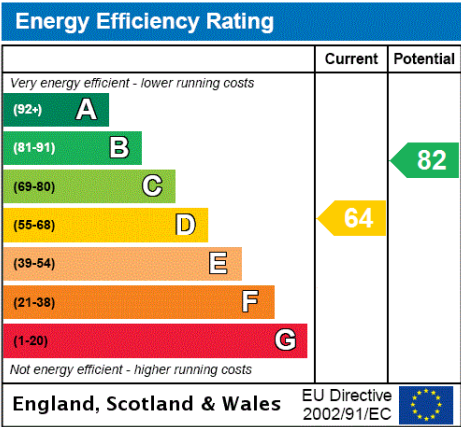
[www.lawrence-rand.co.uk](http://www.lawrence-rand.co.uk)

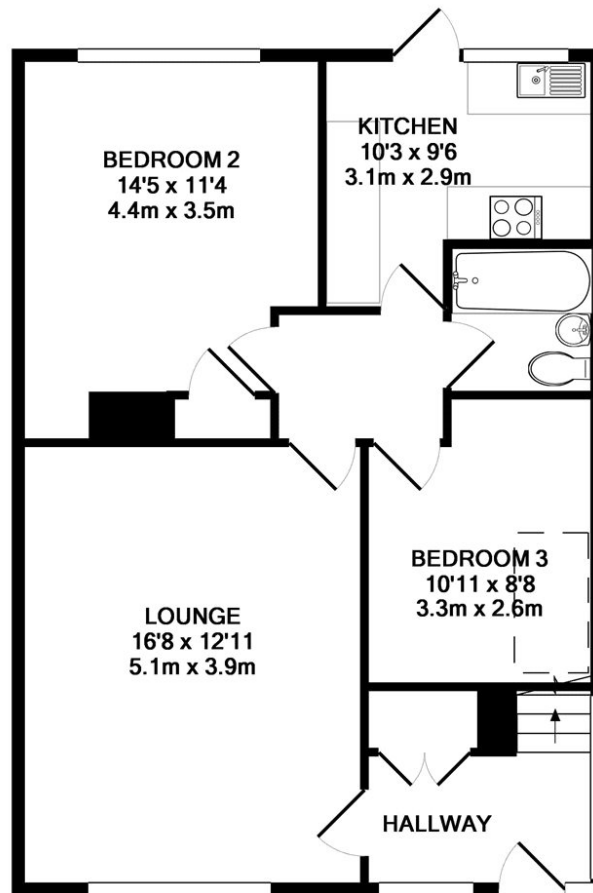
This lovely three bedroom detached bungalow is ready for comfortable and relaxed living.

Steps lead up to the front of the property and once inside, the ground floor accommodation briefly comprises of, entrance hallway with storage cupboards and stairs to the first floor. There is a spacious light filled lounge, lovely modern fitted kitchen with a range of wall and base units with some integral appliances and ample work surfaces. Neutrally decorated the two bedrooms are both doubles, and the ground floor is completed with a fresh modern family bathroom.

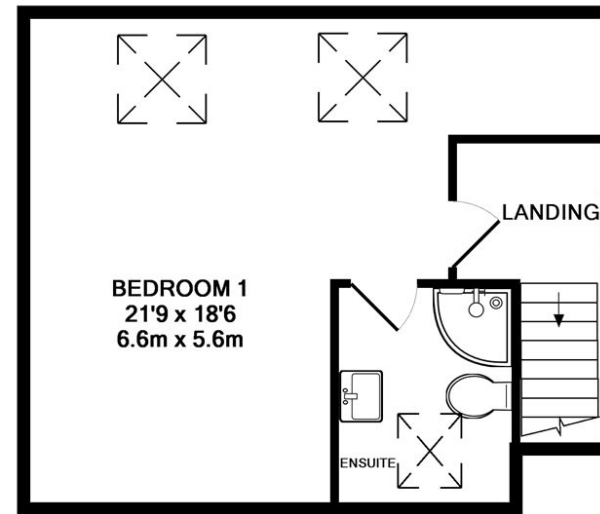
The master bedroom upstairs, has two sky lights allowing bundles of natural light through and a delightful bright airy en-suite also with a sky light, comprising of a wc, vanity wash hand basin and walk in shower cubicle.

Access to the rear garden is via the kitchen, where steps lead from the patio up to the lawned area. The front is paved and off street parking is provided by the side of the property.





GROUND FLOOR  
APPROX. FLOOR  
AREA 661 SQ.FT.  
(61.4 SQ.M.)



1ST FLOOR  
APPROX. FLOOR  
AREA 395 SQ.FT.  
(36.7 SQ.M.)

TOTAL APPROX. FLOOR AREA 1056 SQ.FT. (98.1 SQ.M.)

Whilst every attempt has been made to ensure the accuracy of the floor plan contained here, measurements of doors, windows, rooms and any other items are approximate and no responsibility is taken for any error, omission, or mis-statement. This plan is for illustrative purposes only and should be used as such by any prospective purchaser. The services, systems and appliances shown have not been tested and no guarantee as to their operability or efficiency can be given  
Made with Metropix ©2014

Every care has been taken with the preparation of these Particulars but complete accuracy cannot be guaranteed. Always check the details before agreeing to purchase. This includes checking on the existence of relevant permissions. If there is any point, which is of particular importance to you, please obtain professional confirmation. Alternatively, we will be pleased to check the information for you.

All measurements quoted are approximate. The Fixtures, Fittings & Appliances have not been tested and therefore no guarantee can be given that they are in working order. Photographs are reproduced for general information and it cannot be inferred that any item shown is included in the sale.

Drawings/Sketches/Plans - This representation is provided for general guidance and is not to scale

**THE**  
**Negotiator**  
AWARDS 2009  
WINNER

