



Diamond Road, Ruislip, Middlesex, HA4 0PD



Lawrence Rand
Estate Agents



Diamond Road, Ruislip, Middlesex, HA4 0PD

This neatly presented two bedroom ground floor flat is available for rental immediately.

Ground floor flat

Two bedrooms

Spacious lounge

Garden

Off street parking

Close to local amenities

Guide Price: £1,150 per month



Lawrence Rand

Estate Agents

in the heart of the community.

01895 632 211

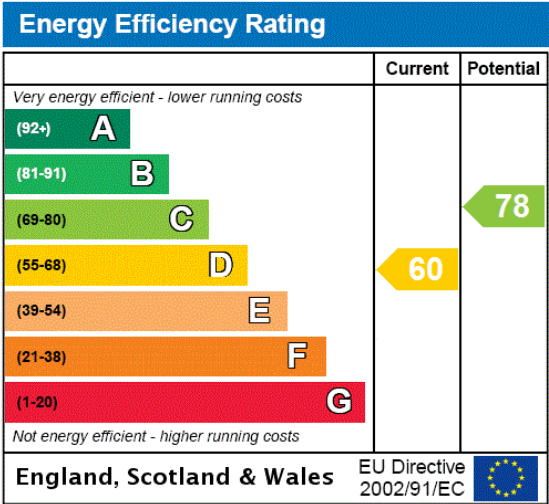
106 Victoria Road, Ruislip, Middlesex, HA4 0AL

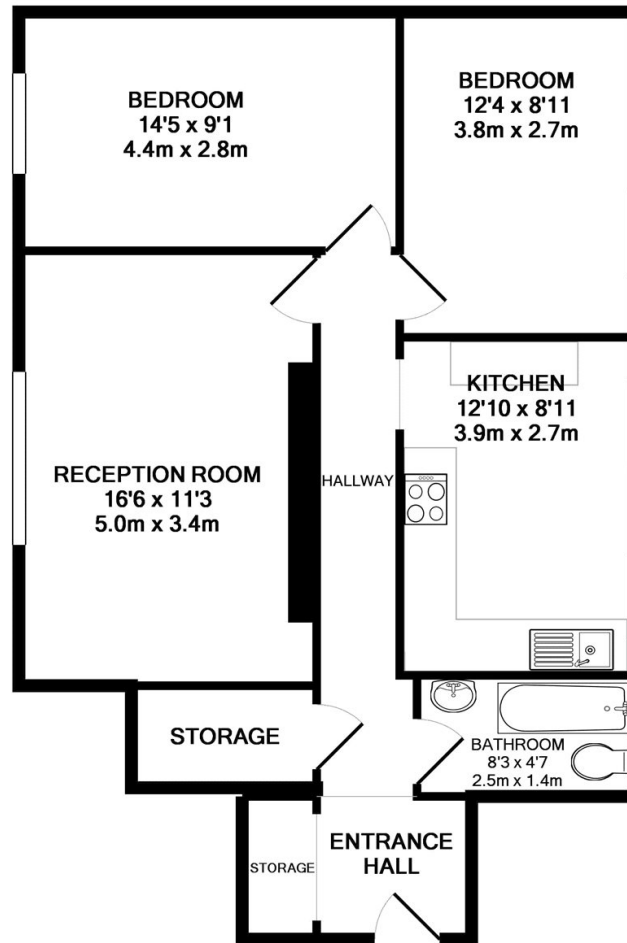
www.lawrence-rand.co.uk

Conveniently located close to South Ruislip shops and transport links (Central/Main) line this two bedroom ground floor flat is ready to move straight in.

The entrance porchway has a large storage area and leads through into the large entrance hallway. There is a spacious lounge, and a good sized kitchen with ample wall and base units and built in oven and hob. There two double bedrooms and a part tiled modern fitted bathroom.

The property also boasts its own garden and off street parking.





TOTAL APPROX. FLOOR AREA 712 SQ.FT. (66.1 SQ.M.)

Whilst every attempt has been made to ensure the accuracy of the floor plan contained here, measurements of doors, windows, rooms and any other items are approximate and no responsibility is taken for any error, omission, or mis-statement. This plan is for illustrative purposes only and should be used as such by any prospective purchaser. The services, systems and appliances shown have not been tested and no guarantee as to their operability or efficiency can be given
Made with Metropix ©2014

PROPERTY MISDESCRIPTIONS ACT 1991: The Agents has not tested any apparatus, equipment, fixtures and fittings, or services, so cannot verify that they are in working order or fit for the purpose. The buyer is advised to obtain verification from his or her Professional Buyer. References to the Tenure of the property are based on information supplied by the Vendor. The agents have not had sight of the title documents. The buyer is advised to obtain verification from their Solicitor. You are advised to check the availability of any property before travelling any distance to view.

THE
Negotiator
AWARDS 2009
WINNER

